







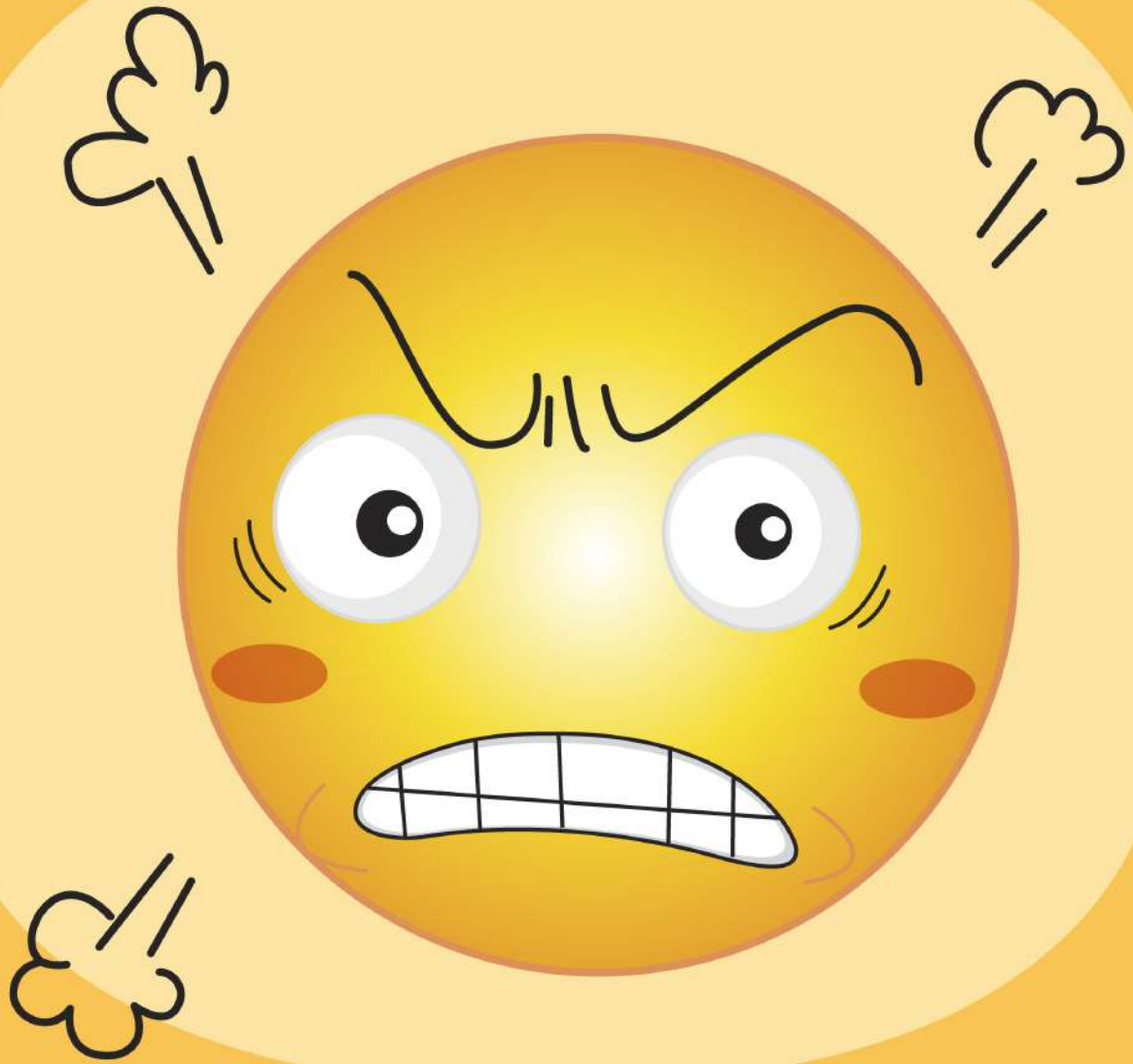


How many?



Count the similar fruits and write the number

 <input type="text"/>	 <input type="text"/>	 <input type="text"/>	 <input type="text"/>
 <input type="text"/>	 <input type="text"/>	 <input type="text"/>	 <input type="text"/>



Angry



Awake



Fat



Happy



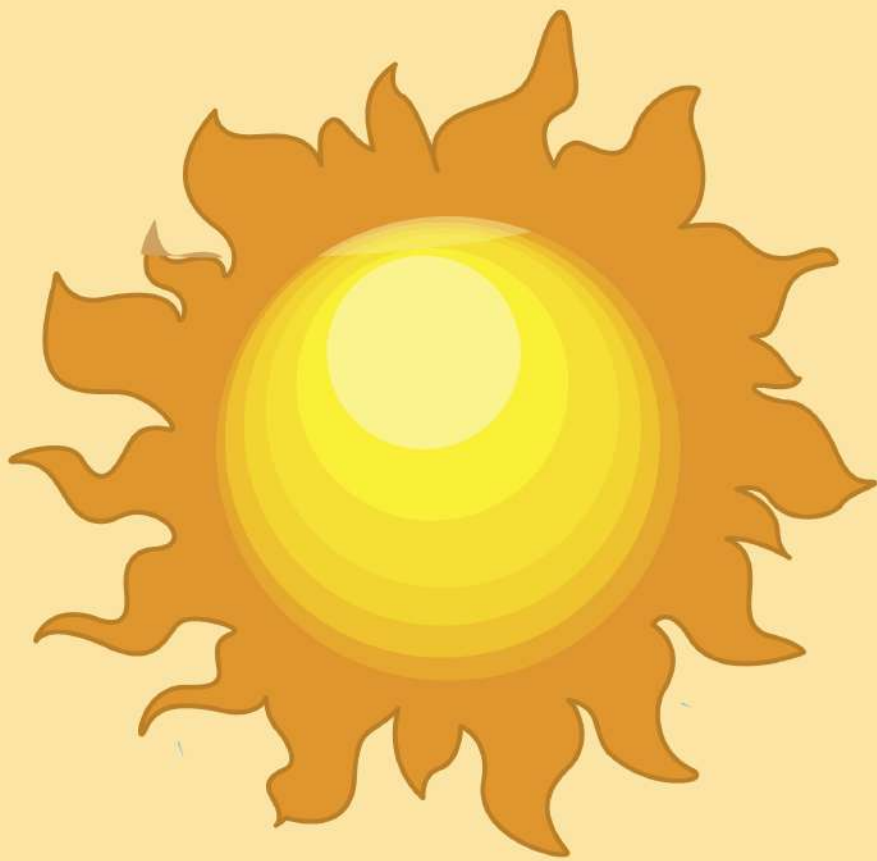
Moon



Rabbit



Sleep



SUN



Thin



Turtle

MATCHING OPPOSITES

DRAW A LINE TO MATCH EACH PICTURE WITH ITS OPPOSITE.



THIN



SLOW

SUN



AWAKE

FAST



FAT

SLEEP



ANGRY

HAPPY



MOON

Autumn Words



Hello
Autumn





Lunch Time

Welcome



Autumn



It's a Windy Day